



Fork (Stopper)

General

TUGPINS is an innovative designer and producer of forks for tugboats, anchor handling-, multipurpose- and aquaculture vessels. Our forks are known for their high quality, user-friendliness and easy maintenance. This guarantees an optimal and cost effective use of the vessel.

Forks are used to secure a line or chain and are an important part of the safety on board of a vessel. Just like our towing pins, our forks are flush deck when not in operation to allow an optimal use of deck space. Our forks are being preserved with an offshore coating and produced with replaceable hardened steel inserts. TUGPINS forks can also be supplied as a modular (M) design which can be lifted out from the deck at any given time for maintenance purposes.

TUGPINS also offers bespoke systems at customer request. We supply forks to the maritime industry for both new construction and refit projects and are available with a Safe Working Load (SWL) up to 125 Metric Ton (MT).

Watertight Plus system (patented)

TUGPINS forks are equipped with our patented Watertight Plus (WP) system. This innovation addresses the number one cause of problems: the damage of the internal mechanical system due to corrosion. Our patented WP designs are 100% watertight during their lifespan.

Because seawater is unable to penetrate the system, forks made by TUGPINS have a number of advantages:

- Less maintenance and reduced operational costs (Opex)
- Longer lifespan
- More sustainable than comparable systems on the market while TUGPINS systems use a light, biodegradable oil instead of traditional lubricants

KEY FEATURES

- 100% watertight
- Compact and modular design
- Safe Working Load up to 125 MT
- Quick release

KEY BENEFITS

- No / less corrosion
- No water below deck
- Reduced weight
- Reduced maintenance
- Environmental friendly
- Reduced operational cost (Opex)
- Easy to install
- Quick delivery

APPLICATIONS

- Dredger support
- Anchor handling
- Buoy handling

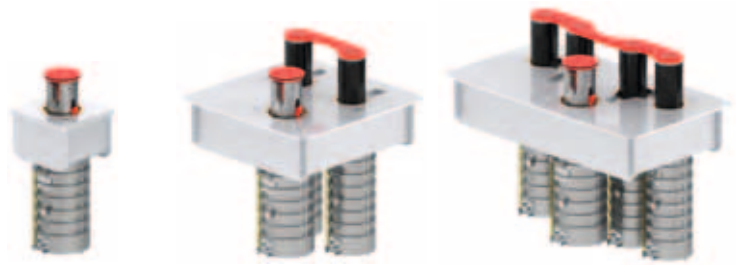
ADDITIONAL INFORMATION


More information can be found at:

www.tugpins.com





Youtube: [tugpins](https://www.youtube.com/tugpins)

Fork (Stopper)



		S1-WP	GP2S1-WP	GPF4S1-WP
Dimensions	Lenght (mm)	600	1400	2150
	Width (mm)	600	1400	1200
	Height (mm)*	1170	1270	1275
Weight (kg)		780	2700	4100
Fork	Stroke (mm)	330	330	330
	Diameter (mm)	250	250	250
	Safe Working Load (MT)	125	125	125
Guide pins	Number	N/A	2	4
	Stroke (mm)	N/A	400	400
	Pitch 1 (mm)	N/A	595	400
	Pitch 2 (mm)	N/A	N/A	595
	Pitch 3 (mm)	N/A	N/A	400
	Diameter (mm)	N/A	220	220
	Safe Working Load (MT)	125	50-100	50-100
Suitable for diameter		32-64	32-64	32-64
Standard certification		●	●	●

Options / complementary products

- Hydraulic Power Unit
- Control box
- Towing pins
- Accumulator
- Control panel
- Remote control
- Automatic lubrication system
- Certification    



* For installation & maintenance purpose, please add another 200 mm

